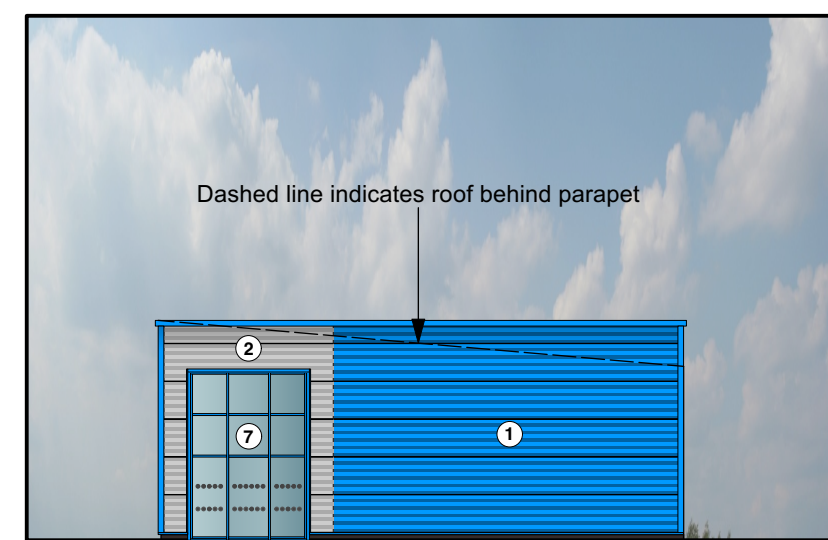


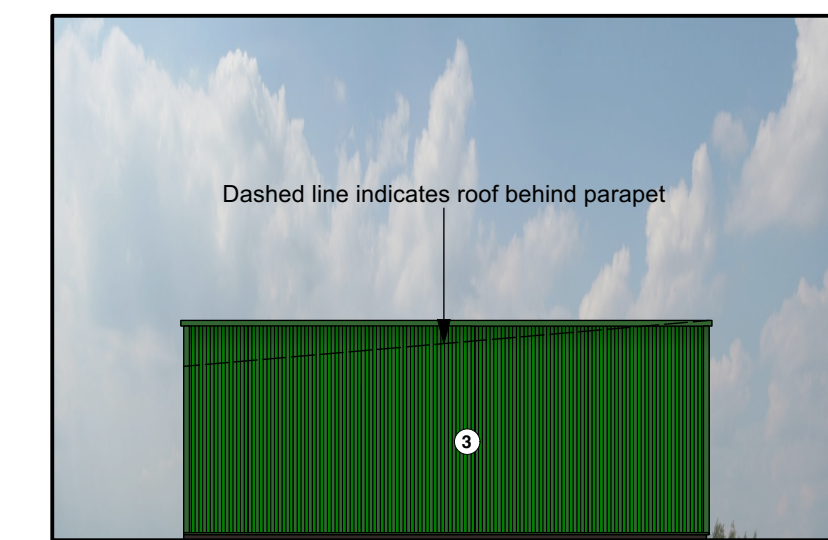
WESTERN ELEVATION
1:200



EASTERN ELEVATION
1:200



SOUTHERN ELEVATION
1:200



NORTHERN ELEVATION
1:200

- KEY:**
- ① MICRORB WALL CLADDING SYSTEM PLASTISOL FINISHED BLUE.
 - ② MICRORB WALL CLADDING SYSTEM PLASTISOL FINISHED GREY WHITE.
 - ③ PROFILED METAL SHEET WALL CLADDING SYSTEM PLASTISOL FINISHED GREEN.
 - ④ PROFILED METAL SHEET ROOF CLADDING SYSTEM PLASTISOL FINISHED MERLIN GREY.
 - ⑤ GRP TRANSLUCENT NON FRAGILE ROOFLIGHTS
 - ⑥ INSULATED ROLLER SHUTTER DOOR, PLASTISOL COATED RAL 5010
 - ⑦ POLYESTER POWDER COATED ALUMINIUM GLAZED SCREEN WITH ENTRANCE DOORS, RAL 5010.
 - ⑧ STEEL DOORSETS, PAINTED GREEN.
 - ⑨ POROUS ACCESS ROAD & CAR PARK
 - ⑩ CAR & VAN BAYS MARKED WITH WHITE/YELLOW THERMOPLASTIC MARKINGS
 - ⑪ LANDSCAPING.
 - ⑫ BOLLARDS PROVIDED AT VULNERABLE PARTS OF THE BUILDINGS.



REV	AMENDMENT	BY	CH	DATE
PB	COLOURS AMENDED			22.11.21
PA	ISSUE			16.11.21

P = PRELIMINARY
 B = BUILDING REG SUBMISSION
 A = CONSTRUCTION STATUS
 H = AS BUILT / H&S FILE ISSUE

DO NOT USE ANY DRAWING ON SITE UNLESS THE REVISION STARTS WITH THE LETTER "A"

Copyright remains the property of Craig Foster Architects and has not been released to any other party unless specifically documented in writing

Do not scale this drawing
 Check all dimensions and detail on site before proceeding
 Report any discrepancies before proceeding

QUINTON HAZEL MOCHDRE
LL28 5BS

REAR SITE DEVELOPMENT

PHASE ONE ELEVATIONS



scale 1:200 @ A1	dwg no. 17171(5)004	rev PB
---------------------	-------------------------------	------------------