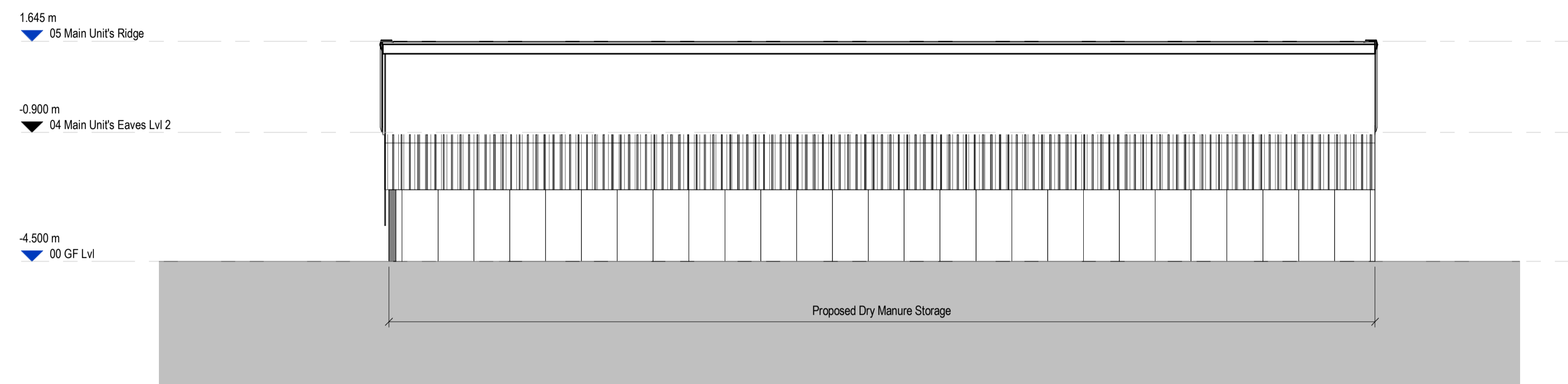


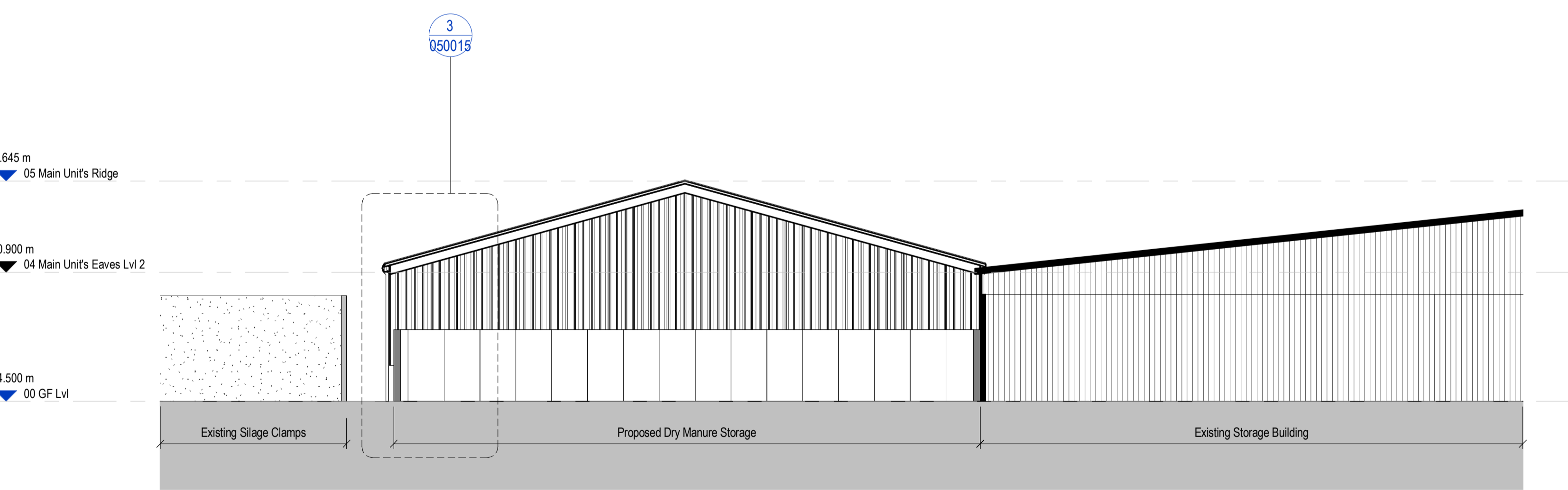
Reference Plan (NTS)

GENERAL NOTES
 This drawing is copyright and owned by Capita Property and Infrastructure Ltd., and is for use on this site only unless contractually stated otherwise.
DO NOT SCALE this drawing (printed or electronic versions). Contractors must check all dimensions from site. This drawing has been printed to the correct scale if the following accords with real measurements:
 0mm 40mm 80mm
 All other design team elements, where indicated, have been imported from the consultant's drawings and reference should be made to the individual consultant's drawings for exact setting out, size and type of component.
 Discrepancies and / or ambiguities within this drawing, between it and information given elsewhere, must be reported immediately to the architect for clarification before proceeding.
 All works are to be carried out in accordance with the latest British Standards and Codes of Practice unless specifically directed otherwise in the specification.
 Responsibility for the reproduction of this drawing in paper form, or if issued in electronic format, lies with the recipient to check that all information has been replicated in full and is correct when compared to the original paper or electronic image. Graphical representations of equipment on this drawing have been coordinated, but are approximations only. Please refer to the Specifications and / or Details for actual sizes and / or specific contractor construction information.
 This original document is issued for the purpose indicated below and contains information of confidential nature. Further copies and circulation will be strictly in accordance with the confidentiality agreement under the contract. This original must be destroyed or returned to the contractor.

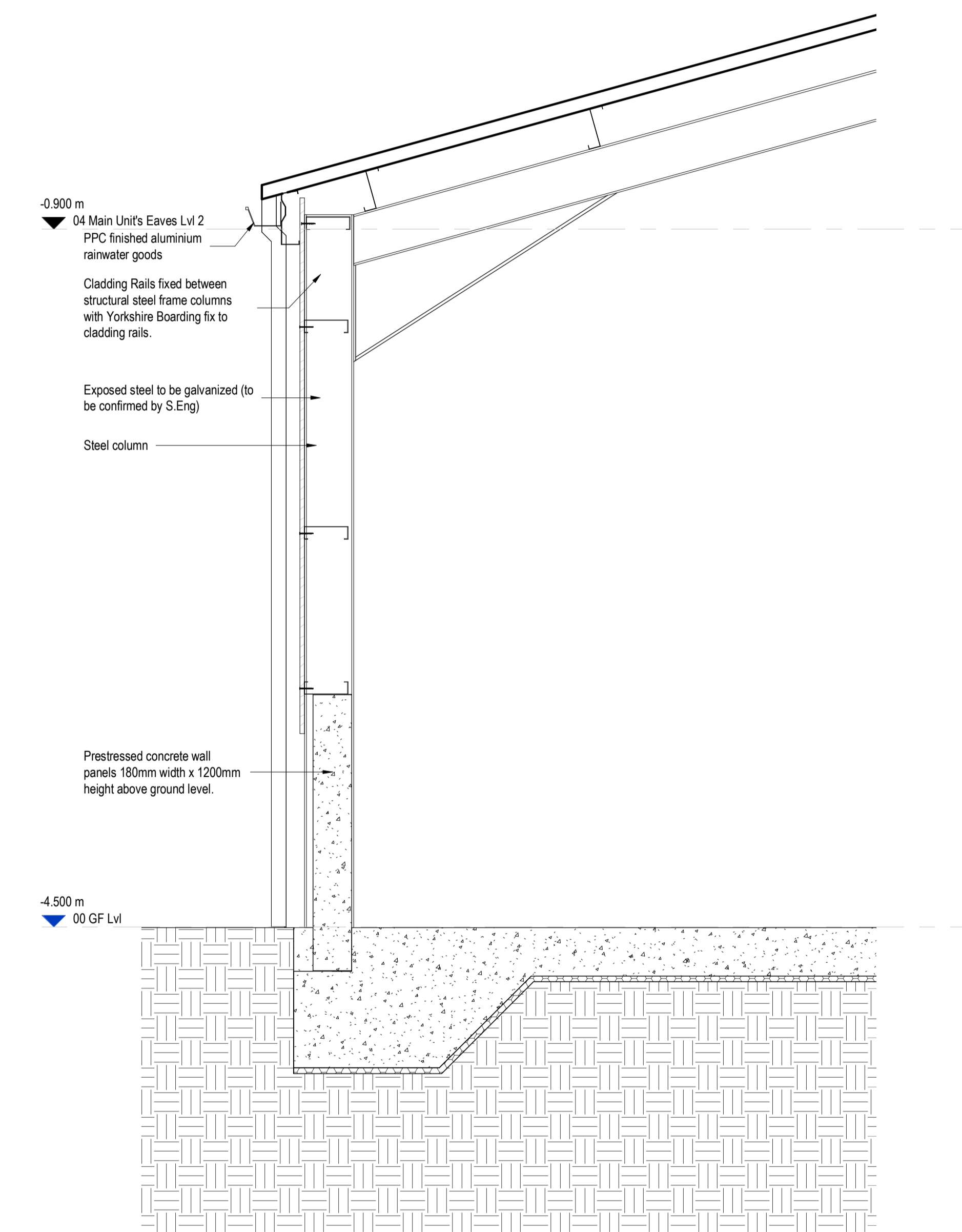
SAFETY, HEALTH AND ENVIRONMENTAL INFORMATION
 Refer to the relevant Construction (Design and Management) documentation where applicable.
 It is assumed that all works on this drawing will be carried out by a competent contractor, working where appropriate to an approved method statement.



1 Section AA
1:100



2 Section BB
1:100



3 Development Section 1
1:20

P02	Planning PreApplication Issue	04.07.2022
P01	Draft issue for pre planning consultation	27.05.22
Rev	Description	Date

Status
D5 - Planning Approval
 Classification
Confidential
 Client
Grwp Llandrillo-Menai

Project
Dairy Development Project - Campws Glynllifon

Drawing
Proposed Sections - Dry Manure Store/Silage Clamps

Scale @ A1	Drawn	Checked	Approved
As indicated	EC	AJ	EC

Project No. CS/098555-70 Date 23.03.2022

Drawing Identifier						
project	origin	zone	level	file type	role	revision
DDP-CAP	Z2	ZZ	DR	A	050015	_rev P02



www.capitaproperty.co.uk
 Capita Property and Infrastructure Ltd.

