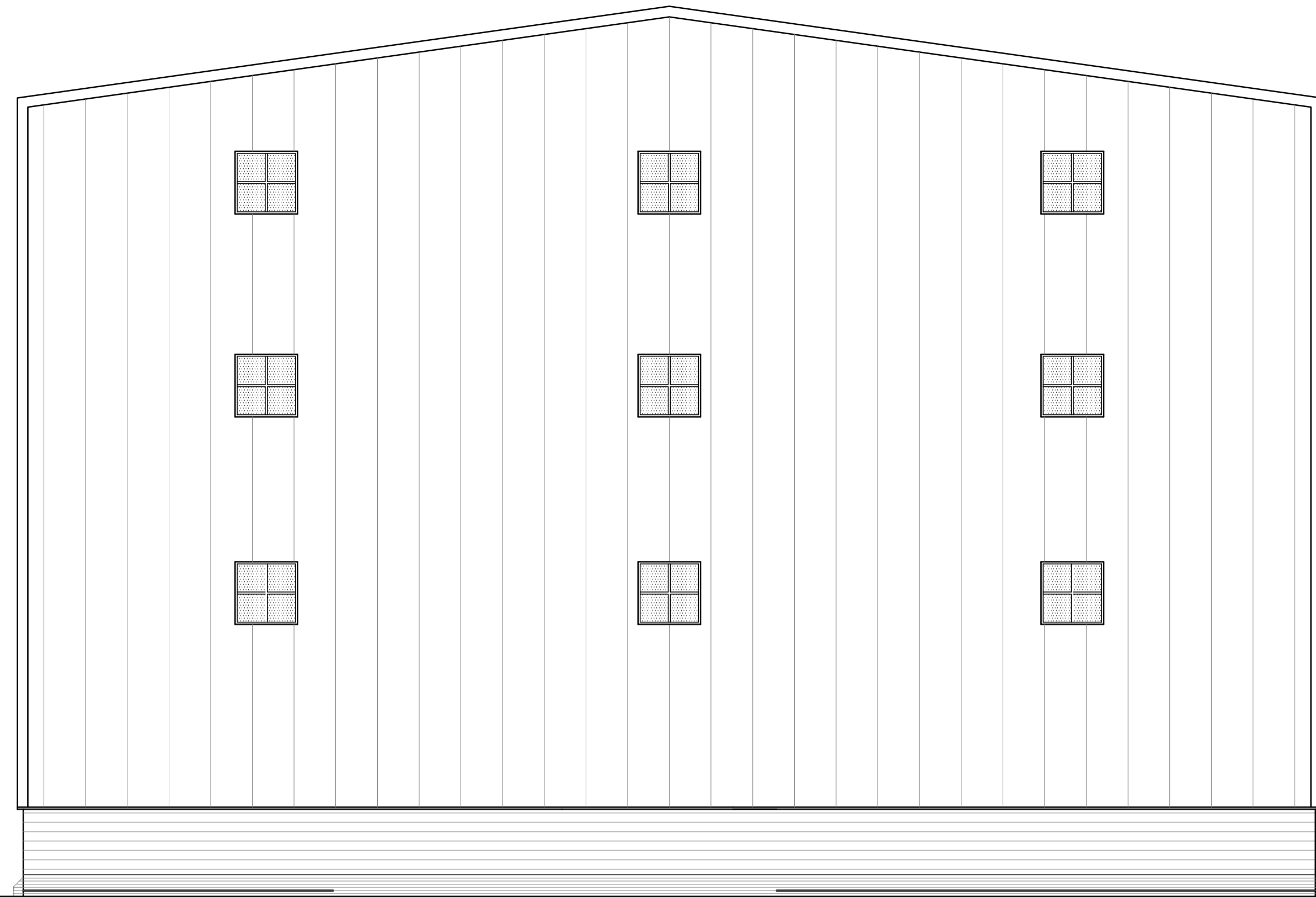
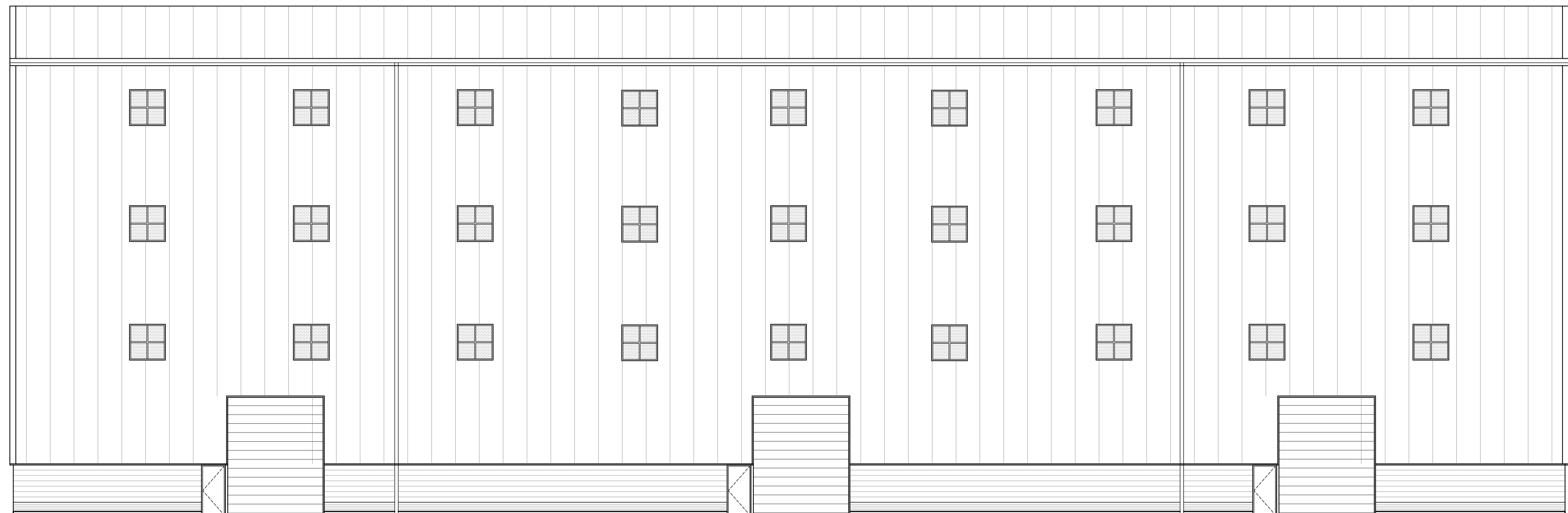


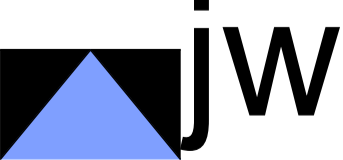
MATERIALS:
 WALLS - KINGSPAN KS1000RW TRAPEZOIDAL COMPOSITE PANEL WITH COLOUR COATED STEEL FINISH. COLOUR - GOOSEWING GREY (RAL 080 70 05)
 WALLS - MASONRY PLINTH CONSTRUCTED WITH FAIRFACED CONCRETE BLOCKWORK & BLUE ENGINEERING BRICK
 ROOF - KINGSPAN KINGZIP 1000 COMPOSITE PANEL WITH COLOUR COATED STEEL FINISH. COLOUR - GOOSEWING GREY (RAL 080 70 05)
 GUTTERS, DOWNPIPES, FASCIAS & TRIMS - COLOUR COATED STEEL FINISH. COLOUR - PEARL GENTIAN BLUE (RAL 5025)
 HANGAR & VERTICAL DOORS - COLOUR COATED STEEL FINISH. COLOUR - GOOSEWING GREY (RAL 080 70 05). PERSONNEL DOORS - COLOUR COATED STEEL FINISH - PEARL GENTIAN BLUE (RAL 5025)
 WINDOWS - COATED STEEL FRAMES - COLOUR - PEARL GENTIAN BLUE (RAL 5025) & GOOSEWING GREY (RAL 080 70 05) WITH DOUBLE GLAZED SEALED UNITS.



PROPOSED SOUTH ELEVATION
 scale 1:100



PROPOSED WEST ELEVATION
 scale 1:100

PROJECT PROPOSED NEW HIGHWAY BUILDING AT ELECTROIMPACT, MANOR LANE, HAWARDEN, FLINTSHIRE, CH5 3ST		 DESIGN SERVICES BRO GYNN, RUTHIN ROAD, DENBIGH DENBIGHSHIRE LL16 3EU T: 01745 814515 M: 07831 538549 e-mail: jw@jwdesignservices.wales
DRAWING PROPOSED SOUTH & WEST ELEVATIONS		
STATUS PLANNING	DATE JAN 2022	DWG NO AP090/1-2
SCALE 1:100 @ A1	PROJECT NO JW090	