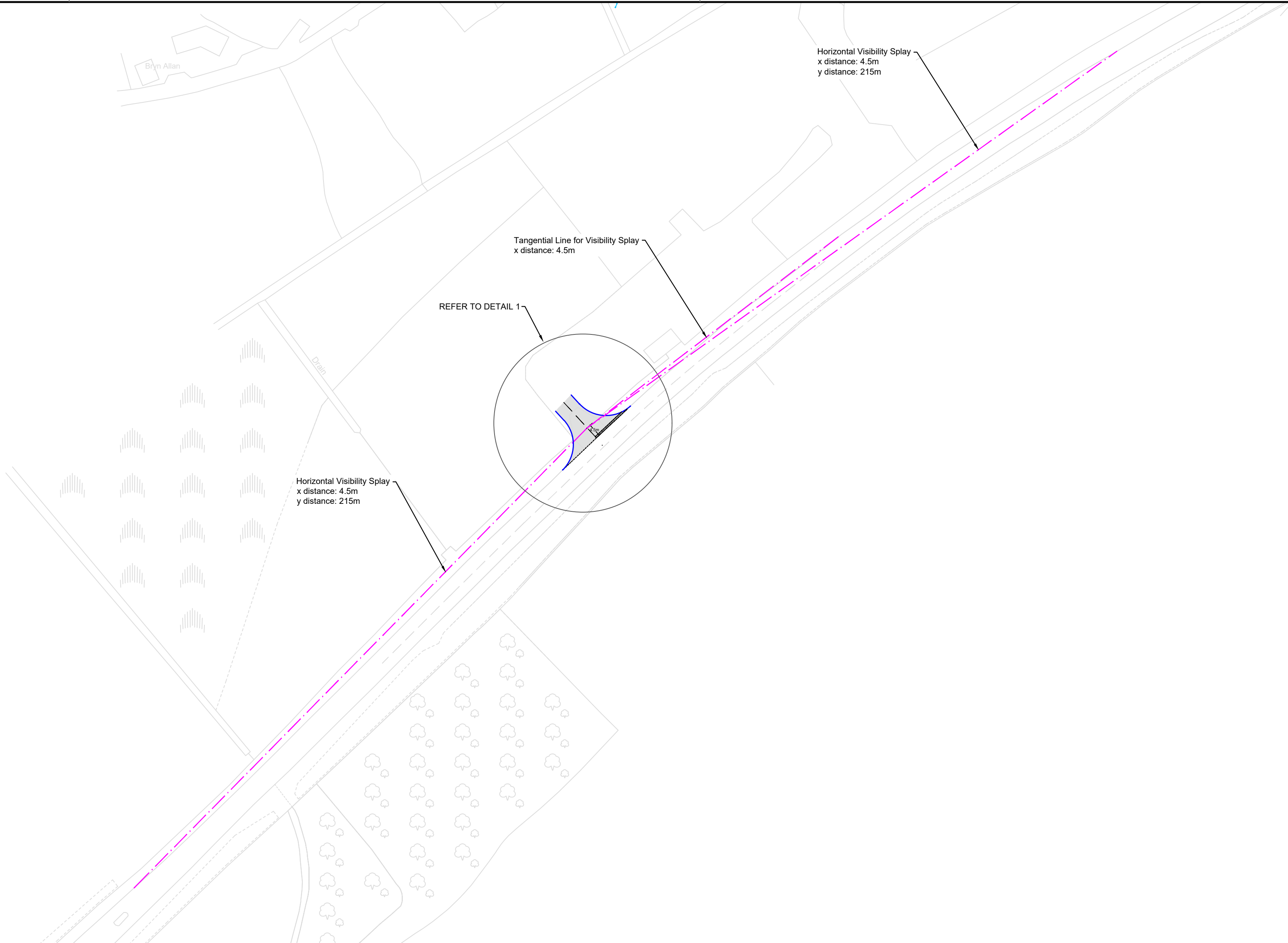


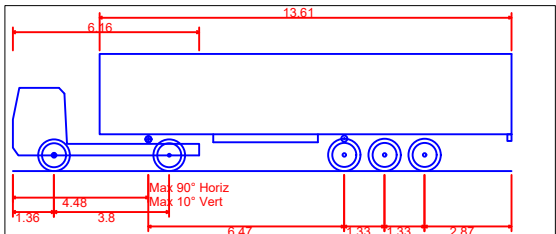
GENERAL ARRANGEMENTS AT ACCESS

1:1000

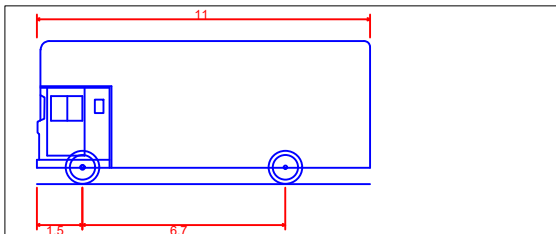


- NOTES**
- Do not scale from this drawing.
 - All dimensions are in metres unless otherwise stated.
 - This drawing is for planning purposes only.
 - This access has been designed in accordance with the DMRB CD123 Geometric design at-grade priority and signal-controlled junctions.

- KEY**
- Proposed Kebline
 - Proposed Road Markings
 - Existing Road Markings
 - Junction Visibility
 - Area of Carriageway Widening



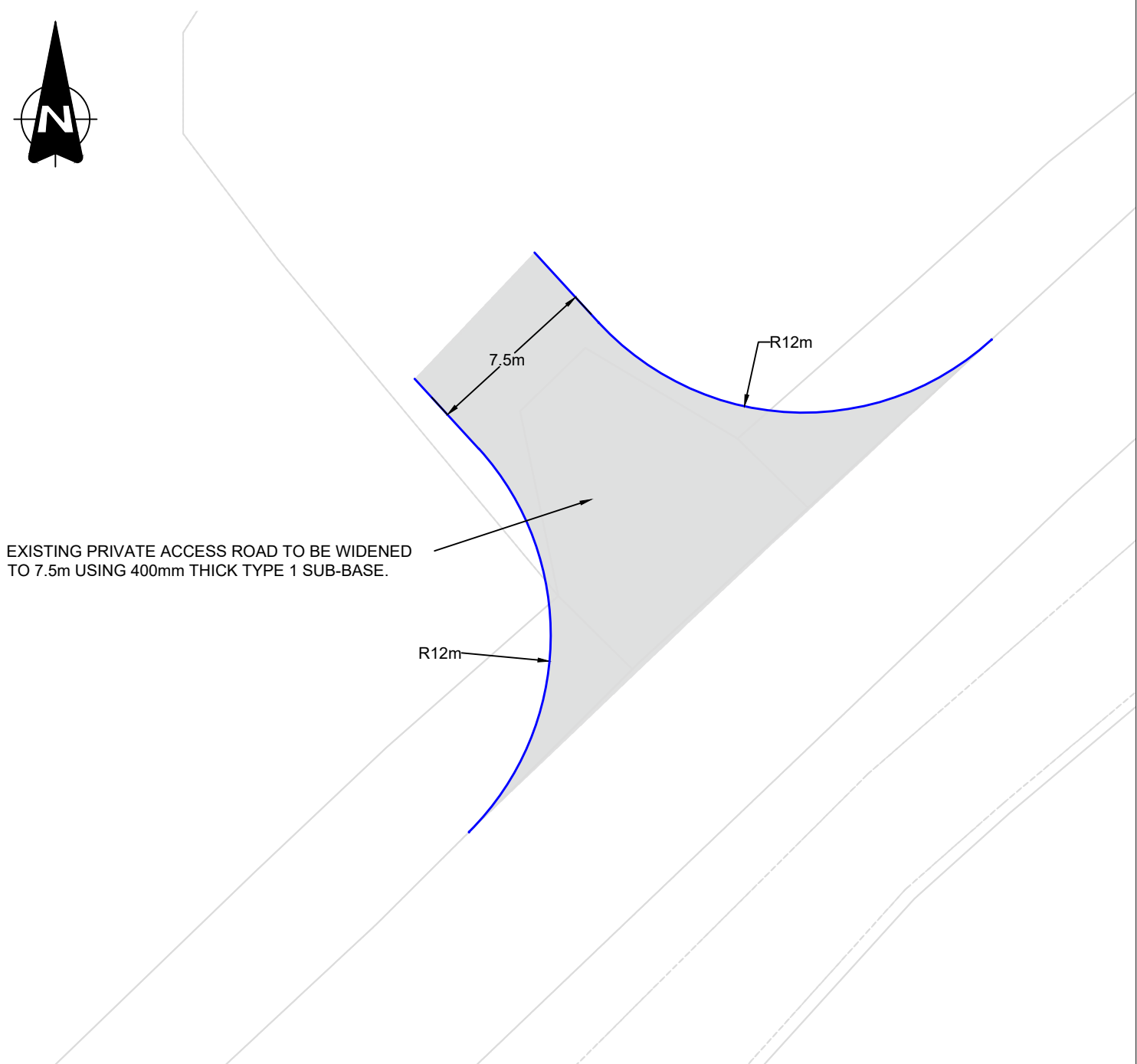
FTA Design Articulated Vehicle (2016)
Overall Length 16.48m
Overall Width 2.55m
Overall Body Height 3.87m
Min Body Ground Clearance 0.515m
Max Track Width 2.47m
Lock to lock time 8.0s
Kerb to Kerb Turning Radius 6.60m



Pantechicon / Removals Van
Overall Length 11.00m
Overall Width 2.50m
Overall Body Height 4.73m
Min Body Ground Clearance 0.541m
Track Width 2.50m
Lock to lock time 6.00s
Kerb to Kerb Turning Radius 12.20m

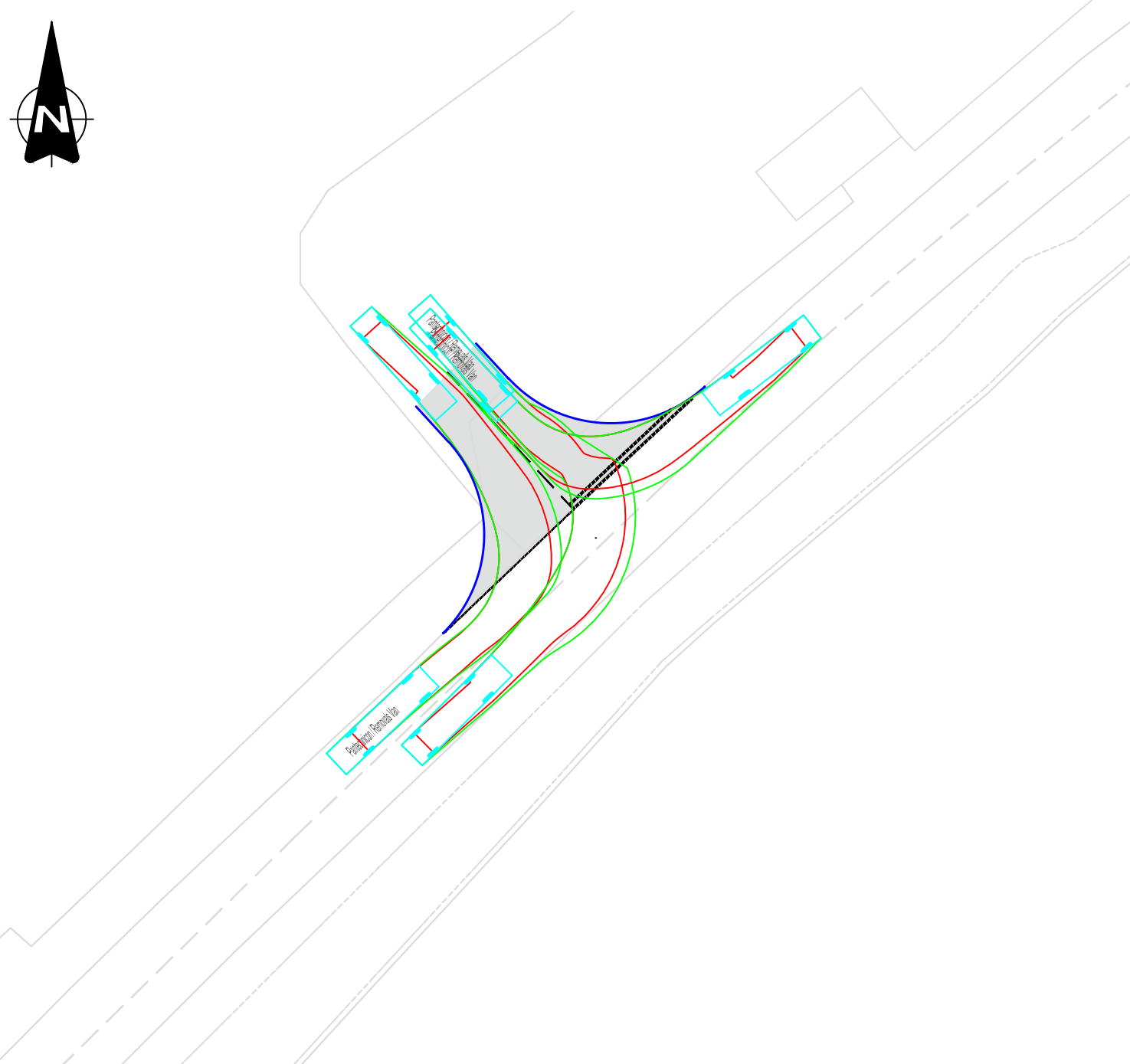
DETAIL 1 - ACCESS DETAILS

1:500



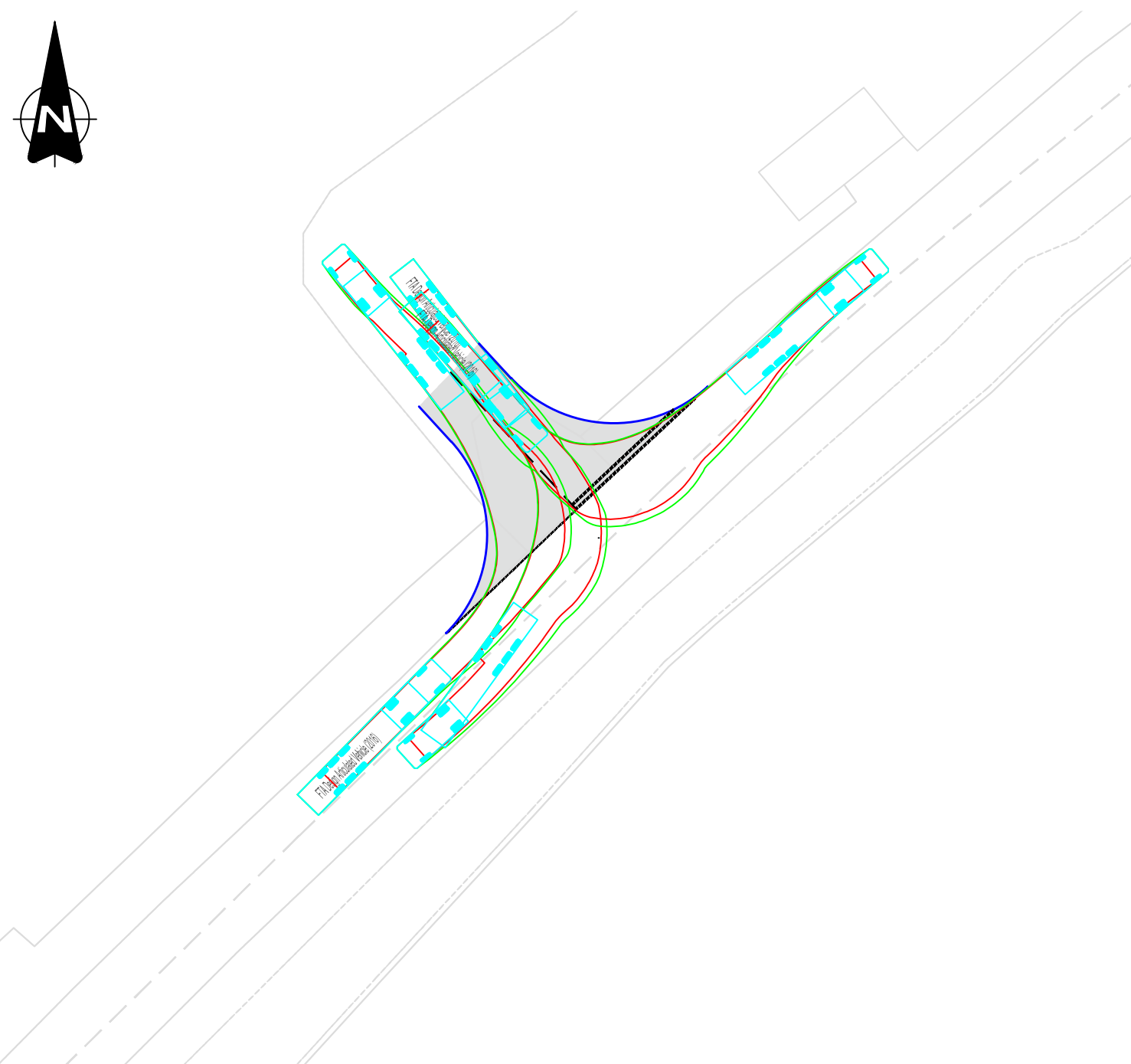
DETAIL 2 - SWEEPED PATH ANALYSIS - LARGE VAN

1:500



DETAIL 3 - SWEEPED PATH ANALYSIS - MAX LEGAL HGV

1:500



Rev	Date	Revision details	Drawn	Checked	Approved

© This drawing is the property of SYSTRA Limited and the information can only be reproduced with their prior permission.



Milburn House,
Dean Street,
Newcastle upon Tyne
NE1 1LE
T 0191 249 3816
E uk_newcastle@systra.com

Client
HOCHTIEF (UK) CONSTRUCTION LTD

Project
PENRHYNDEUDRAETH

Title
PROPOSED SITE ACCESS

Drawn	MB	Checked	CC	Approved	SE	Original disp. size	A1
Date	16.05.23	Scale	N/A	Drawing Status	PRELIMINARY	Rev.	P01
Drawing Number	SVIP-PEN-GA01-P01						