



Roof Ridge - Ventilation

Combined with Yorkshire Boarding allows for natural ventilation and odour to effectively escape the building

External Storage

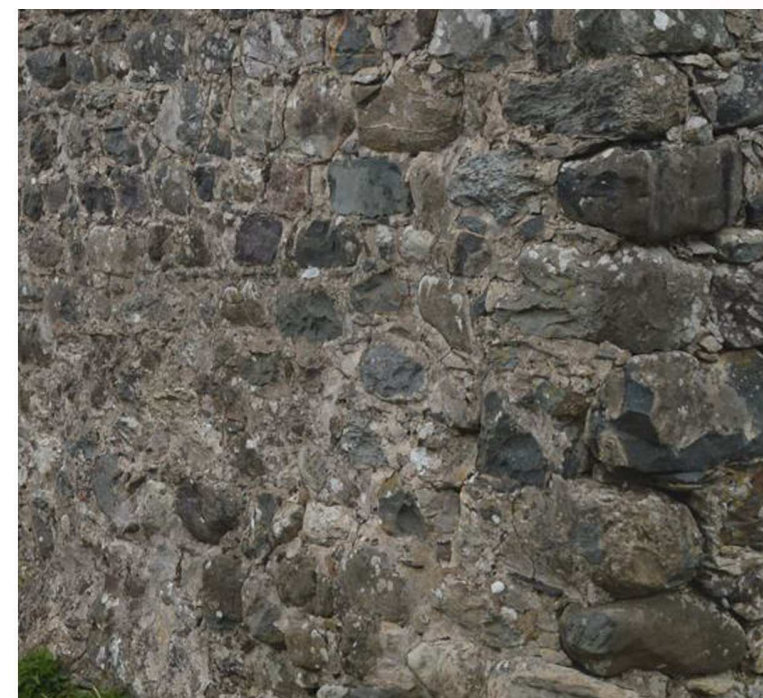
External storage silo/feed storage to client/specialist detail and specification

External Envelope

High performance building fabric, detailing, combined with high quality recyclable materials will create a building that is equally functional and sustainable

External Wall - Metal

Ventilated profiled steel wall cladding. Refer to sheet 050008 for proposed locations of cladding

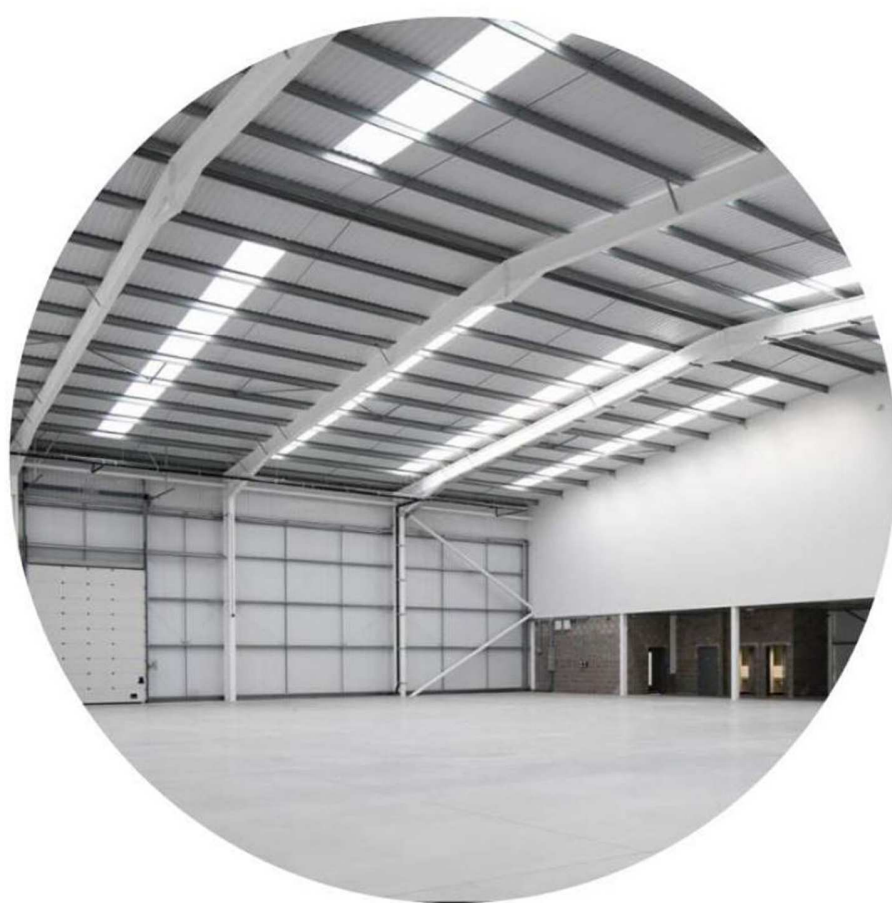


External Wall - Stone

Stone walling to replicate existing buildings such as the Pheasantry. Re-claimed stone to be used where possible

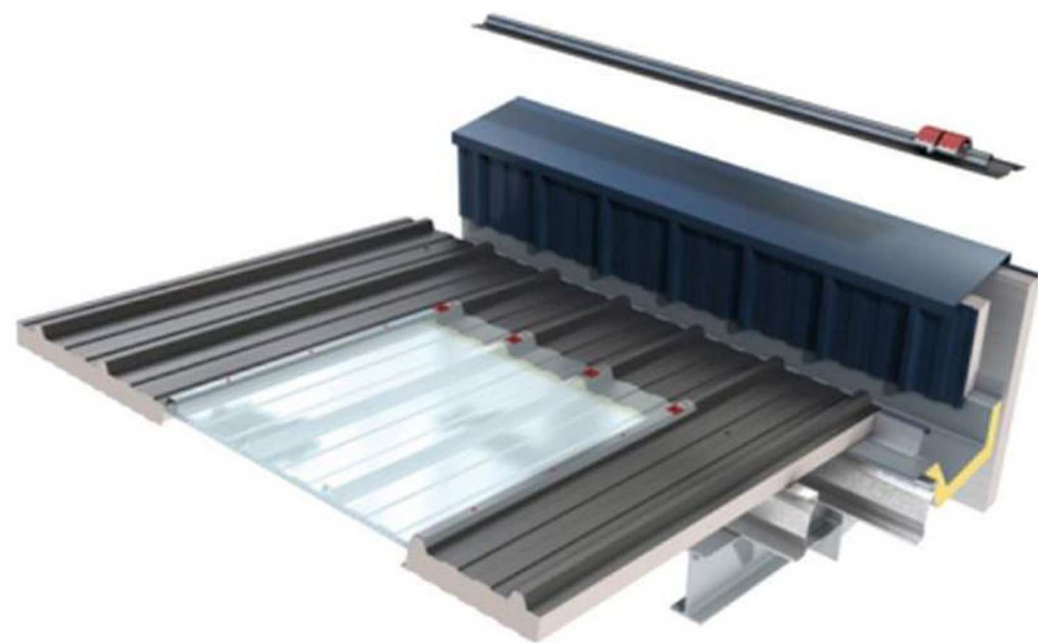
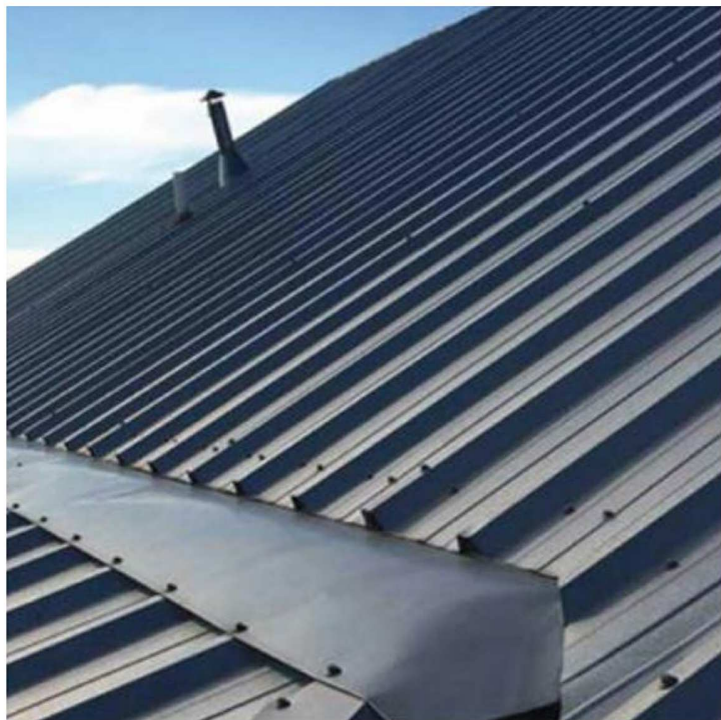
Low Impact Materials

Specify responsibly sourced materials. Structurally efficient design. Materials specified with high recyclability. Minimise the use of primary aggregates. Standardised components to reduce waste.



Roof

Introducing roof lights allows a large amount of even daylight into the centre of the deep plan livestock housing area of the building



External Wall - Yorkshire Board

Timber Yorkshire Boarding spaced as per detail on sheet 050009

Lighting

All fixed lighting will be low voltage LED TBC by MEP

Fire and Acoustics

2 hour fire and acoustic separation between admin block and livestock housing

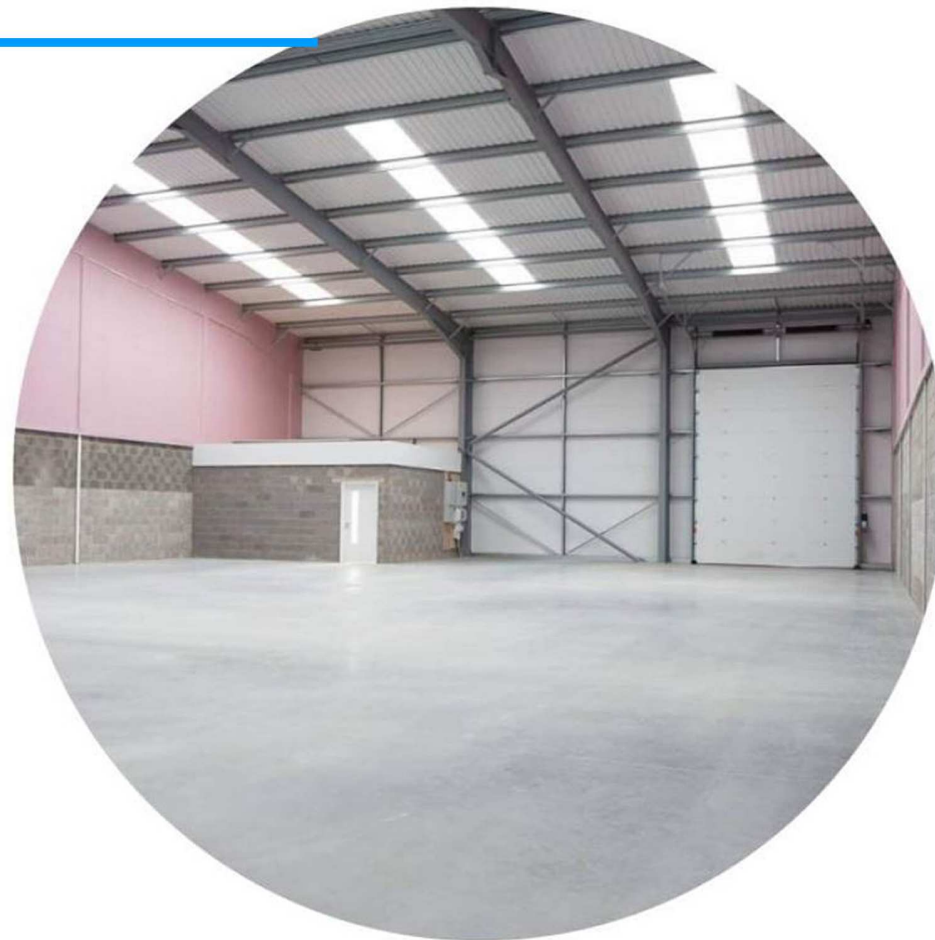
Insulation

The admin block will be well insulated to minimise heat loss



Photovoltaics to Roof

Photovoltaic panels to production block roof. Number and type of PV panels to MEP detail and specification



Adaptability

Structural extension, (vertically or horizontally). Internally flexible space. Flexible building services

GENERAL NOTES

This drawing is copyright and owned by Capita Property and Infrastructure Ltd., and is for use on this site only unless contractually stated otherwise.

DO NOT SCALE this drawing (printed or electronic versions). Contractors must check all dimensions from site. This drawing has been printed to the correct scale if the following accords with real measurements:



All other design team elements, where indicated, have been imported from the consultant's drawings and reference should be made to the individual consultant's drawings for exact setting out, size and type of component.
Discrepancies and / or ambiguities within this drawing, between it and information given elsewhere, must be reported immediately to the architect for clarification before proceeding.
All works are to be carried out in accordance with the latest British Standards and Codes of Practice unless specifically directed otherwise in the specification.
Responsibility for the reproduction of this drawing in paper form, or if issued in electronic format, lies with the original paper or electronic image. Graphical representations of equipment on this drawing have been co-ordinated, but are approximations only. Please refer to the Specifications and / or Details for actual sizes and / or specific contractor construction information.
This original document is issued for the purpose indicated below and contains information of confidential nature. Further copies and circulation will be strictly in accordance with the confidentiality agreement under the contract. This original must be destroyed or returned to the contractor.

SAFETY, HEALTH AND ENVIRONMENTAL INFORMATION

Refer to the relevant Construction (Design and Management) documentation where applicable.

It is assumed that all works on this drawing will be carried out by a competent contractor, working where appropriate to an approved method statement.

P02	Planning PreApplication Issue	04.07.2022
P01	Draft issue for pre planning consultation	27.05.22

Rev	Description	(CHK'd / App'd)	Date
-----	-------------	-----------------	------

Status

D5 - Planning Approval

Classification

Confidential

Client

Grwp Llandrillo-Menai

Project

Welsh Sheep Centre - Campws
Glynllifon

Drawing

Sustainable Materials Sheet - Welsh
Sheep Centre

Scale @ A1	Drawn EB	Checked EC	Approved JD
------------	-------------	---------------	----------------

Project No.	Date
CS/098555-39	16.05.2022

Drawing Identifier	project	origin	zone	level	file type	role	number	revision
WSC-CAP - Z1 - XX - DR - A	-	-	-	-	-	-	050013	_rev P02

CAPITA
Architecture

www.capitaproperty.co.uk
Capita Property and Infrastructure Ltd.