

Notes
Figured dimensions are to be used in all cases. Dimensions should not be scaled from drawing. All existing dimensions should be checked on site before commencement of the work. Any discrepancies in dimensions should be clarified with the Architect prior to commencement of the work. No deviation from this drawing will be permitted without the prior written consent of the Architect. This drawing is to be read in conjunction with all the relevant Mechanical and Electrical drawings. This drawing is to be read in conjunction with the relevant Structural Engineer's drawings, structural calculations and recommendations. This drawing is to be read in conjunction with the relevant Fire Safety Strategy drawings.

This drawing must be read in conjunction with LMA drawing 7500_Strategy_DesignersRiskAssessment which indicates all current and active designers risks that have been identified by Lovelock Mitchell Architects in accordance with the CDM Regulations 2015.

This drawing is copyright and to be returned to the architect on completion of the contract.

Gross Internal Area Schedule - 1 Storey Bungalow

Level	Area
Ground Floor	104.0 m ²
	104.0 m ²

Room Schedule for Bungalow

Room Name	Area
airing	1.06 m ²
bathroom	4.42 m ²
bathroom Acc	6.45 m ²
bedroom (double)	13.46 m ²
bedroom (single)	8.53 m ²
bedroom (twin)	12.73 m ²
hallway	15.20 m ²
kitchen / dining	15.54 m ²
lounge	17.53 m ²
services	0.46 m ²
storage	2.44 m ²
Store ASHP	1.10 m ²
Grand total: 12	98.93 m ²

3BP Bungalow - General Storage

Name	Area	Volume
Bungalow Acc		
services	0.5 m ²	0.92 m ³
storage	2.4 m ²	5.85 m ³
Store ASHP	1.1 m ²	2.64 m ³
airing	1.1 m ²	2.54 m ³
Grand total: 4	5.1 m ²	11.95 m ³

Minimum general storage requirements for 5 persons: 5m³ TOTAL

Note: - Any over provision in kitchen units can count towards general storage.

- For volume calculations a height of 2m has been used for all general storage areas, except in the understairs storage where the slope of the underside of the stairs has been used.

NOTE: Orientation of PV panels varies across house type- Refer to site plans for orientation and specialist design.

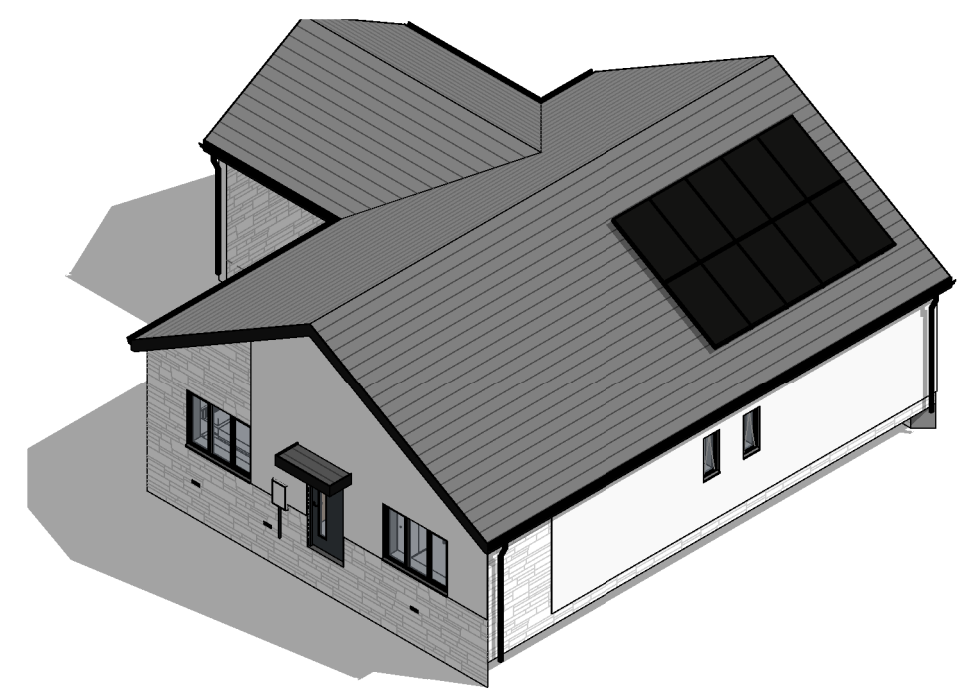
Rev.	Revision description	Drawn	Checked	Date
P2	Drawings issued for PAC	DP	NM	05-11-21
P1	First Issue of Drawing, Drawing issued for information and comments	DP	NM	21-10-21

Lovelock Mitchell Architects
3 Stanley Street, Chester, CH1 2LS
Tel +44 (0) 1244 404321
e-mail: admin@lovelockmitchell.com
web: www.lovelockmitchell.com

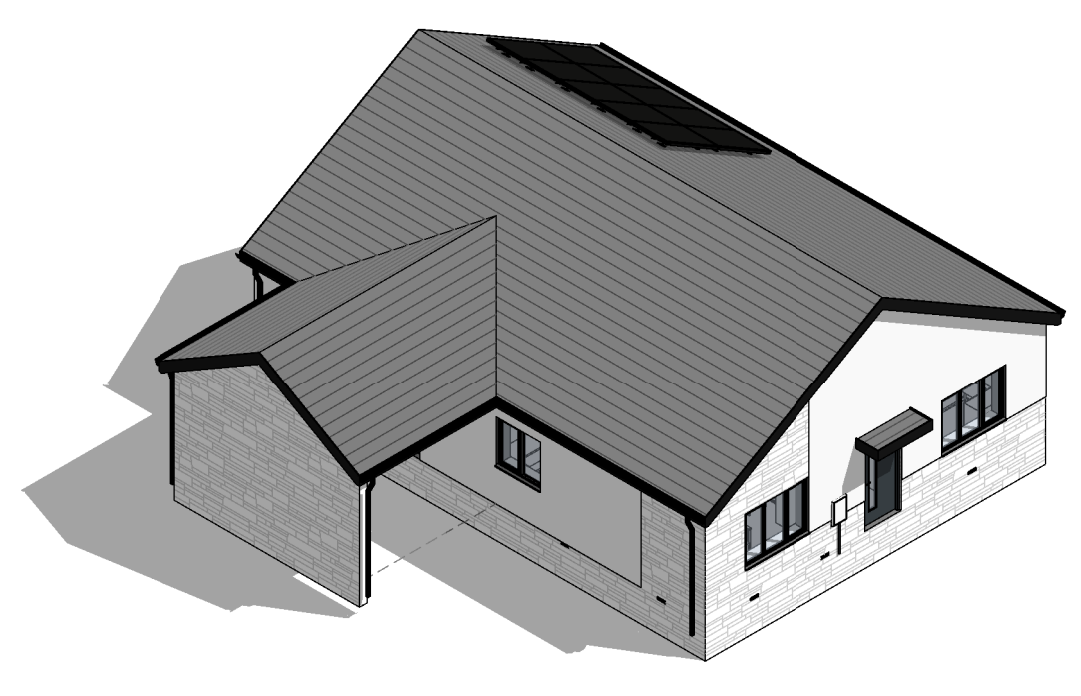
Project
Development - Dev at Tre Angharad
Bodedern, Anglesey, LL65 3ST

Title
Planning_3B5P_Bungalow_GA_Set_Type-4

LMA Project	Drawing number	Rev.
1816	CAA LMA XX XX DR A 7006	P2



3D_View02



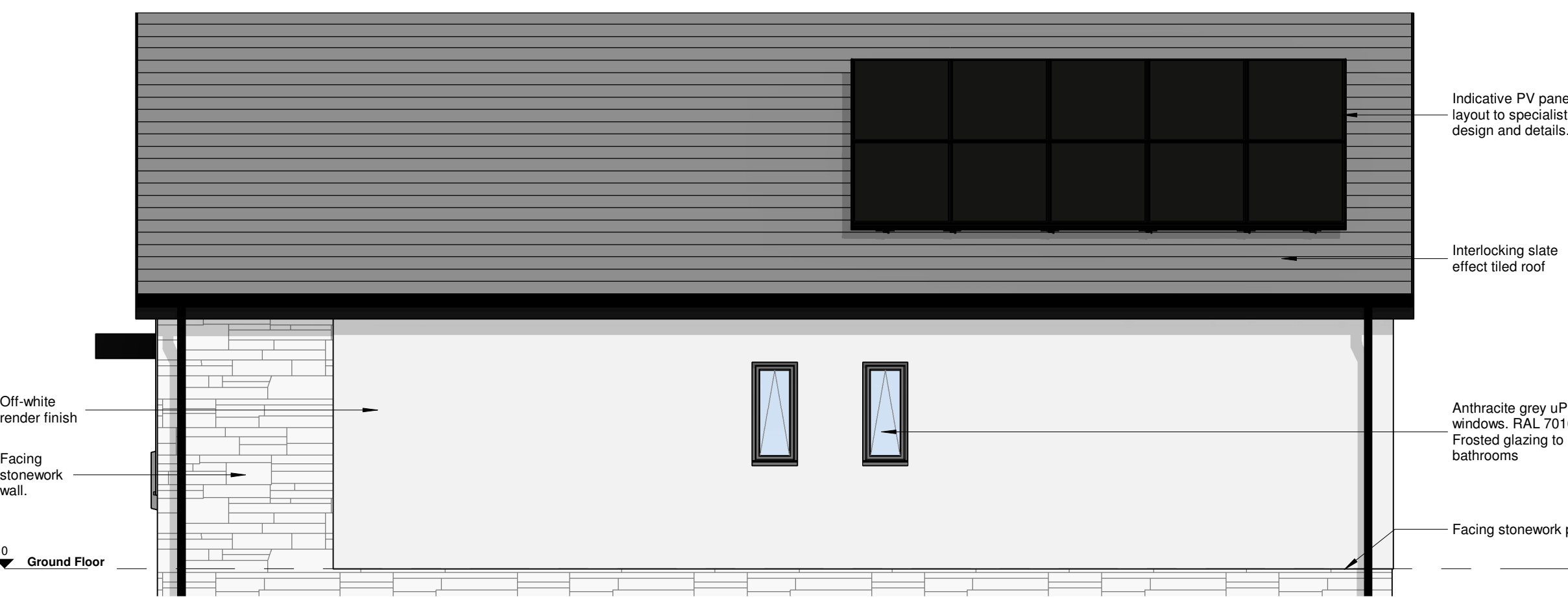
3D_View01



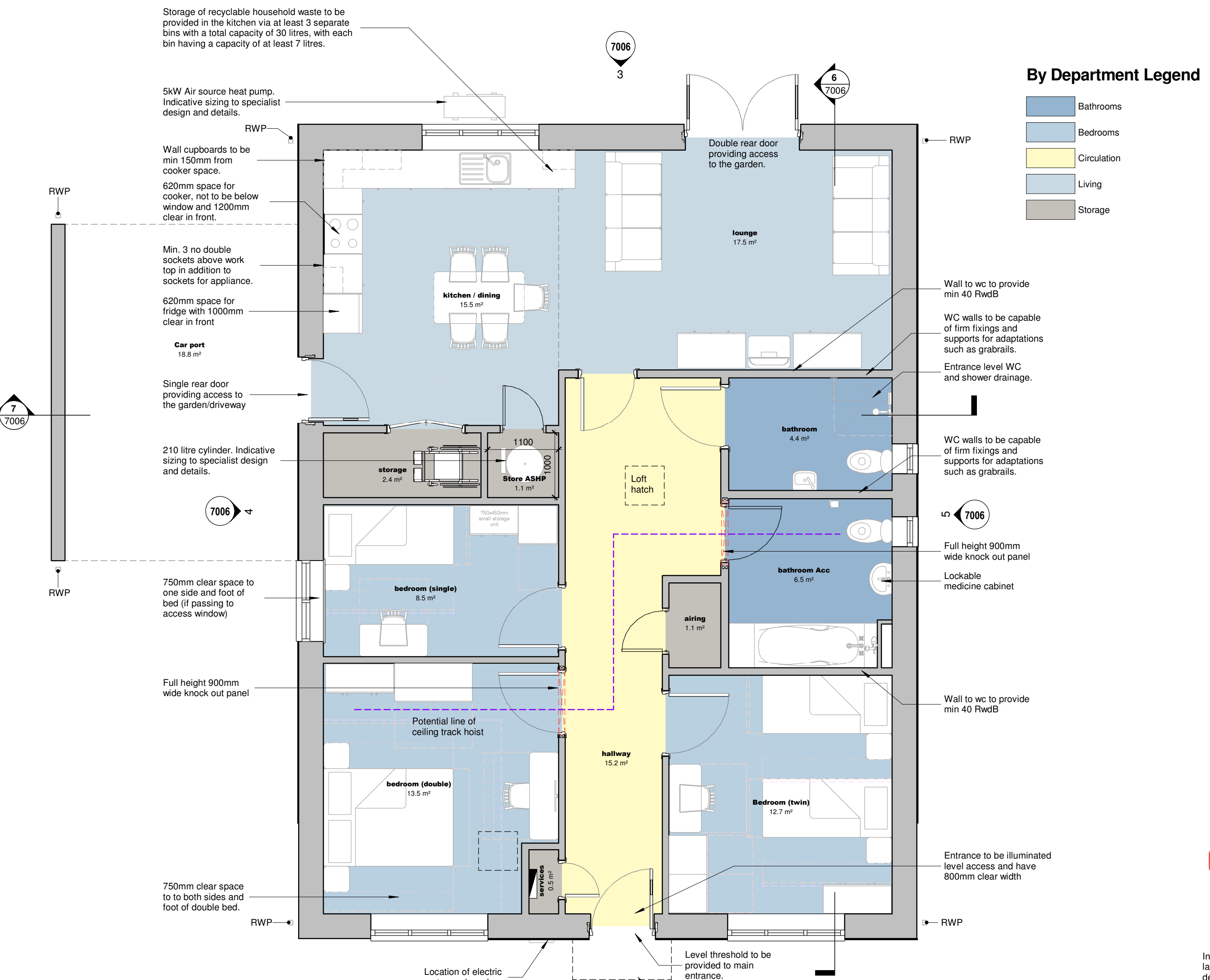
2 Front Elevation
Scale: 1 : 50



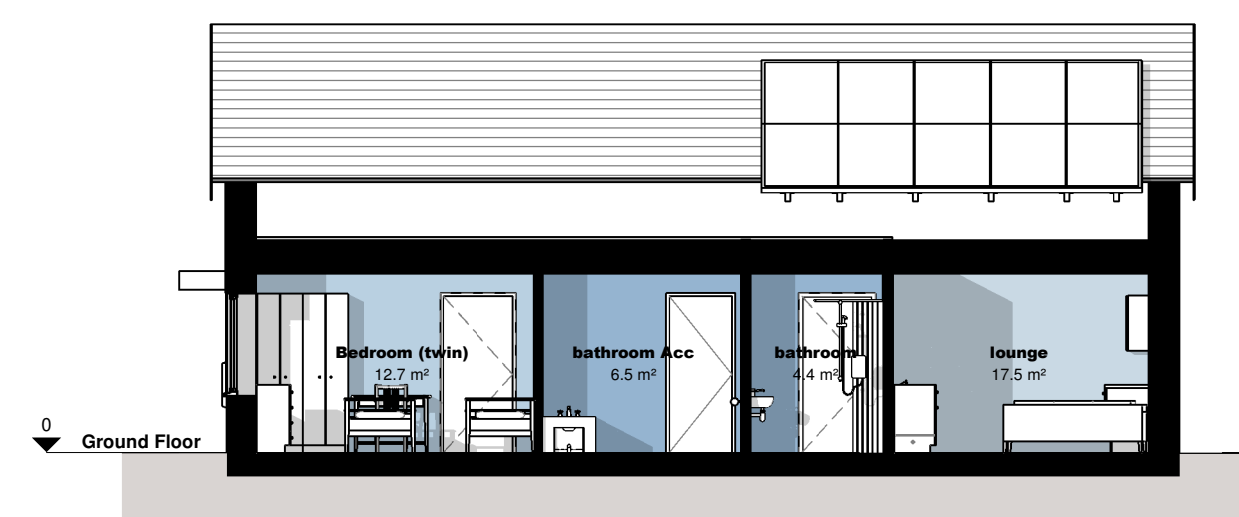
3 Rear elevation
Scale: 1 : 50



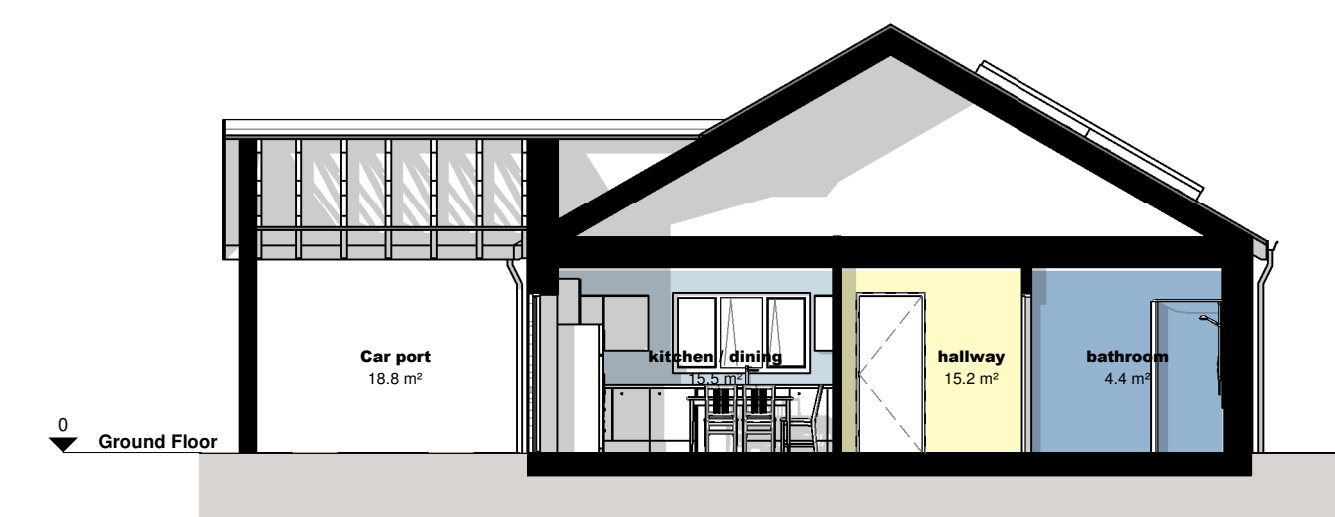
5 Side elevation-02
Scale: 1 : 50



1 Ground Floor Plan as Proposed
Scale: 1 : 50



6 GA Section A-A
Scale: 1 : 100



7 GA Section B-B
Scale: 1 : 100



4 Side elevation-01
Scale: 1 : 50

By Department Legend

- Bathrooms
- Bedrooms
- Circulation
- Living
- Storage