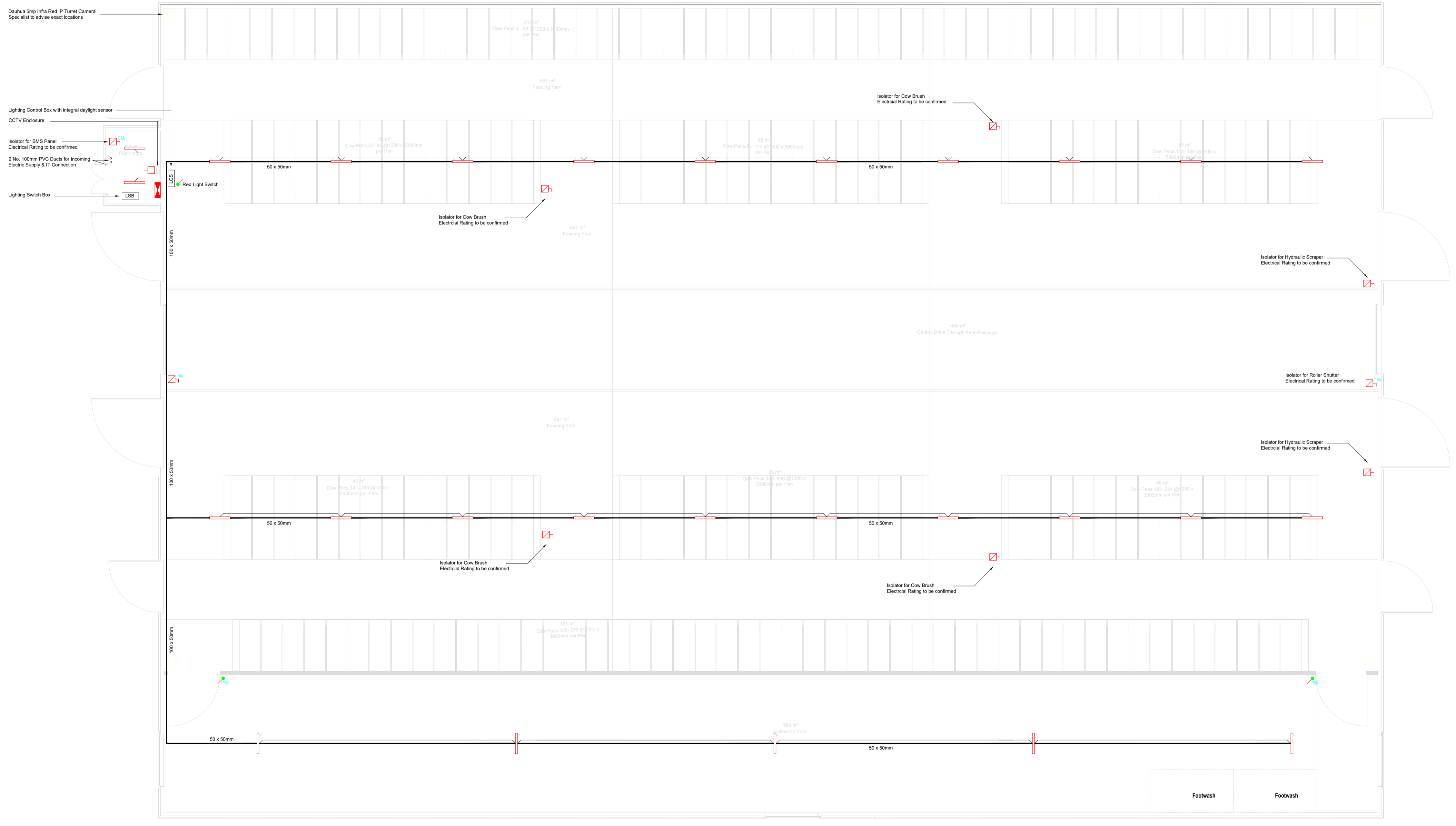


This drawing is copyright and owned by Capita Property and Infrastructure Ltd. and is for use on this site only unless contractually stated otherwise.  
**DO NOT SCALE** this drawing (printed or electronic versions). Contractors must check all dimensions from site.  
 All other design team elements, where indicated, have been imported from the consultant's drawings and reference should be made to the individual consultant's drawings for exact setting out, size and type of component.  
 Discrepancies and / or ambiguities within this drawing, between it and information given elsewhere, must be reported immediately to the architect for clarification before proceeding.  
 All works are to be carried out in accordance with the latest British Standards and Codes of Practice unless specifically directed otherwise in the specification.  
 Responsibility for the reproduction of this drawing in paper form, or if issued in electronic format, lies with the recipient to check that all information has been replicated in full and is correct when compared to the original paper or electronic image. Graphical representations of equipment on this drawing have been approximate, but are approximate only. Please refer to the specifications and / or Details for actual sizes and / or specific contractor construction information.  
 The original document is issued for the purpose indicated below and contains information of confidential nature. Further copies and circulation will be strictly in accordance with the confidentiality agreement under the contract. This original must be destroyed or returned to the contractor.  
 Capita Property and Infrastructure Ltd. Registered office as below:  
 Registered in England and Wales No. 20115542 Part of Capita plc  
 71 Victoria Street, Westminster, London, SW1H 0EA. www.capita.co.uk  
**SAFETY, HEALTH AND ENVIRONMENTAL INFORMATION**  
 Refer to the relevant Construction (Design and Management) documentation where applicable.  
 It is assumed that all works on this drawing will be carried out by a competent contractor, working where appropriate to an approved method statement.



Location Key Plan (Not to Scale)

Rev	Description	By/CHK'd/ App'd	Date
P00	Primary Issue for Comment	MHR/C	14.07.22

Purpose of Issue  
**S2 - Fit for Information**  
 Classification  
**Commercial In Confidence**



Project  
**Dairy Development Project - Campws Glynllifon**

Drawing  
**Proposed Ground Floor Plan Dairy Farm Lighting & Emergency Lighting Layout**

Scale @ A0	Drawn	Checked	Approved
1 : 100	M.H	DH	RC

Project No.	Date
CS98555-39	14.06.22

Drawing Identifier	BS1192 / Uniclass Classification
DDP CAP Z1 · 00 · DR · E · 63 · 0001 · P00	BS1192 / Uniclass Classification

