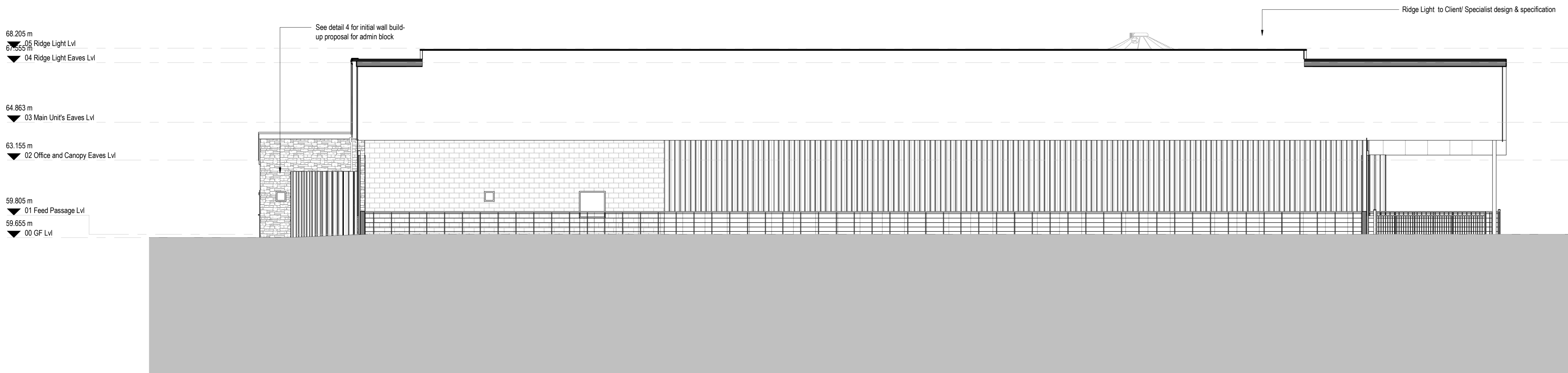
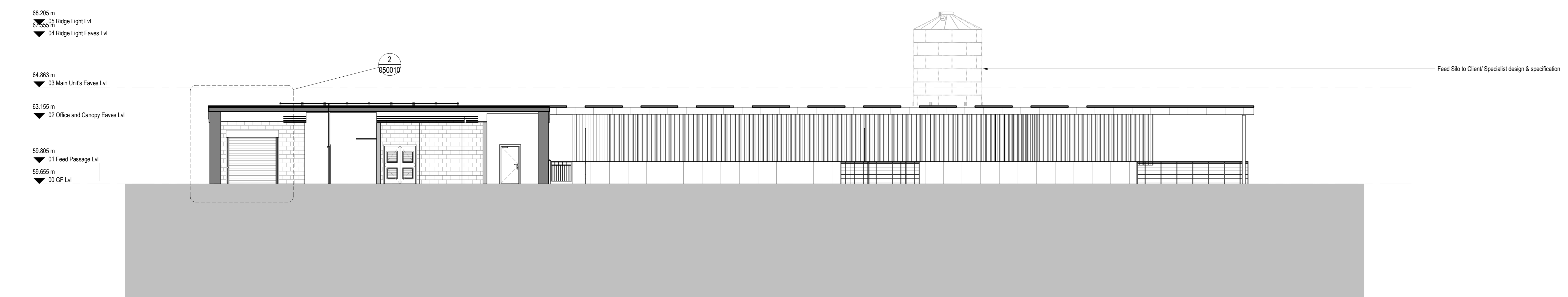


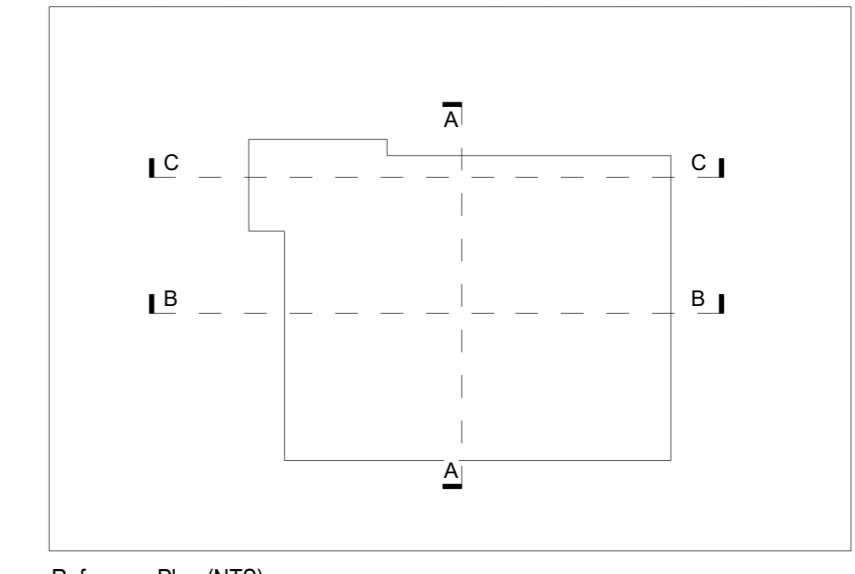
1 Section AA
1: 100



2 Section BB
1: 100



3 Section CC
1: 100



Reference Plan (NTS)

GENERAL NOTES
This drawing is copyright and owned by Capita Property and Infrastructure Ltd. and is for use on this site only unless expressly stated otherwise.
DO NOT SCALE this drawing (printed or electronic version). Dimensions must be taken from the drawing. This drawing has been printed to the correct scale if the following records with real measurements.
All other design team elements, where indicated, have been imported from the consultant's drawing and reference should be made to the individual consultant's drawings for exact setting out, size and type of component.
Dimensions and/or annotations within this drawing, between each information given elsewhere, must be approved immediately to the architect for draft/issue before proceeding.
All works must be carried out in accordance with the latest British Standards and Codes of Practice unless specifically stated otherwise in the specification.
Responsibility for the reproduction of this drawing in paper form, or if issued in electronic format, lies with the recipient to check that all information has been replicated in full and is correct when compared to the original paper or electronic image. Digital reproduction is dependent on the drawing being used as ordered, but are approximations only. Please refer to the Specifications and/or Details for actual size and in specific instances consult the information.
This original document is issued for the purpose of illustration and complete information or confirmation. Further copies and circulation will be made in accordance with the confidentiality agreement under the contract. This original must be destroyed or returned to the contractor.

SAFETY, HEALTH AND ENVIRONMENTAL INFORMATION
Refer to the relevant Construction Design and Management documentation where applicable.
It is assumed that all works on this drawing will be carried out by a competent contractor, working where appropriate to an approved method statement.

P02	Planning PreApplication Issue	04.07.2022
P01	Draft issue for pre-planning consultation	27.05.22
Rev	Description	Issue / Rev / Date
Status		
D5 - Planning Approval		
Classification		
Confidential		
Client		
Grwp Llandrillo-Menai		

Project
Welsh Sheep Centre - Campws Glynllifon

Drawings
Proposed Sections - Welsh Sheep Centre

Scale @ A0	Drawn	Checked	Approved
As indicated	EC	MB	EC
Project No.	Date		
CS/098555-39	23.03.2022		

Drawing Identifier
WSC-CAP - Z1 - ZZ - DR - A - 050009_REV P02