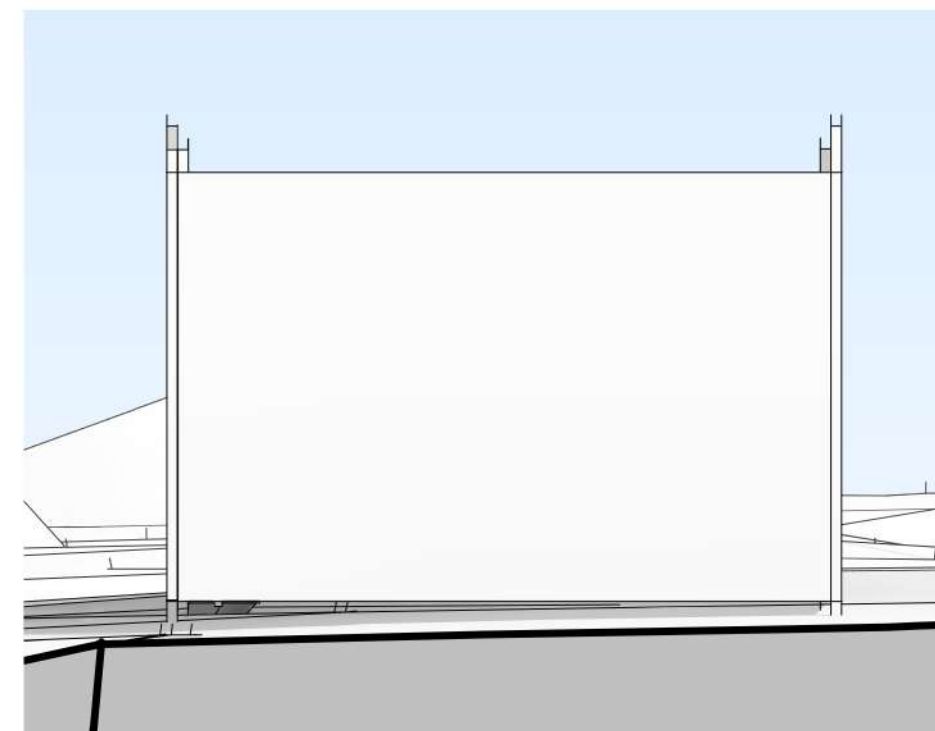
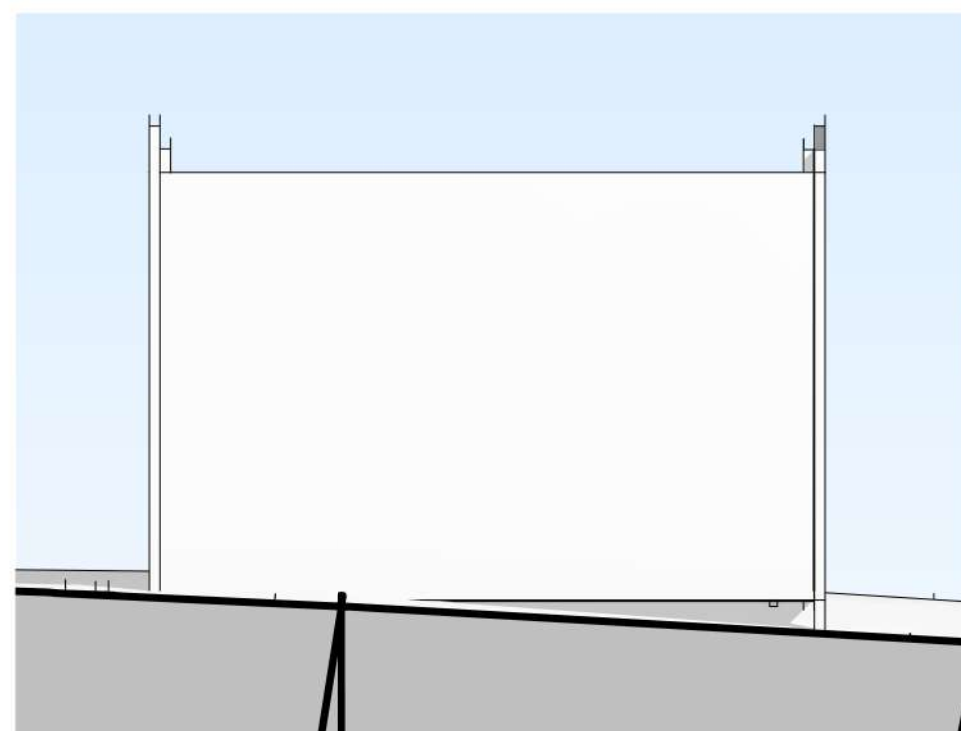
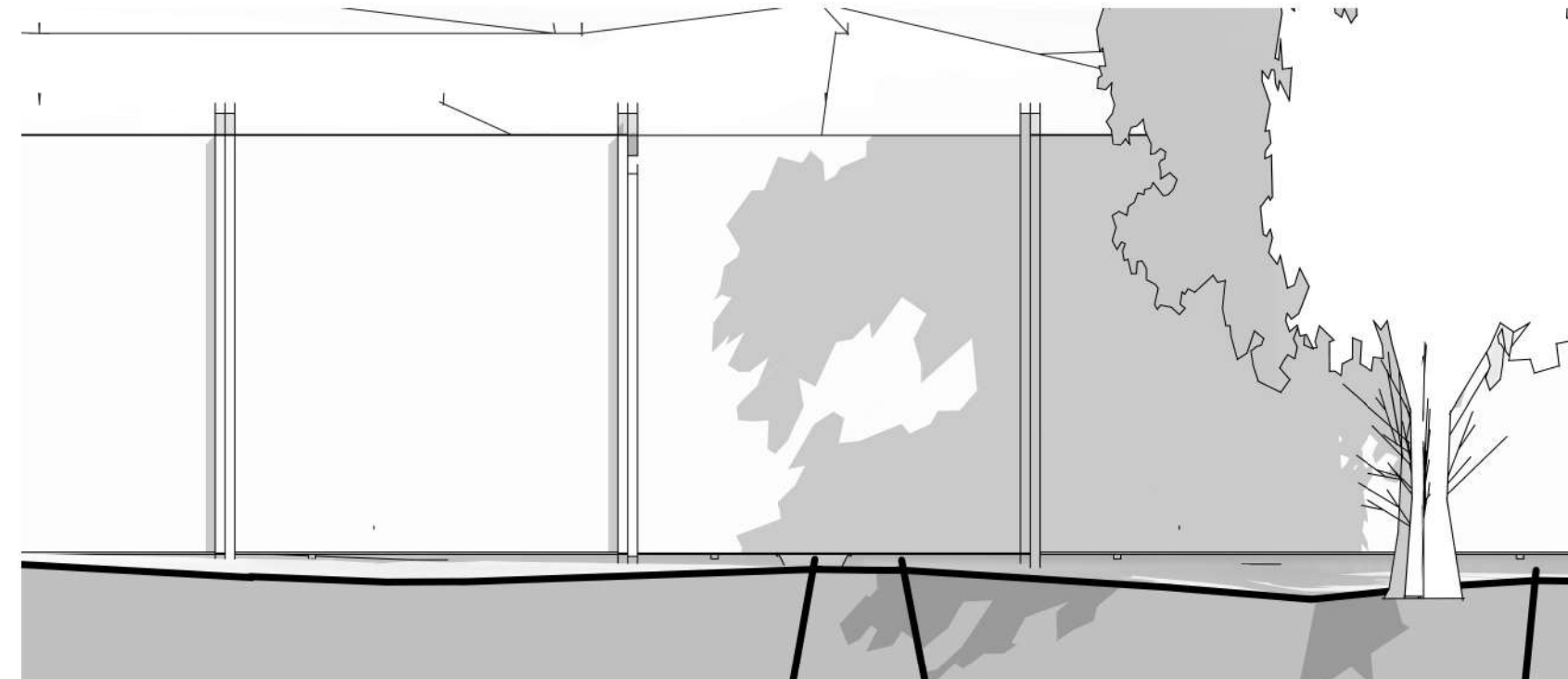
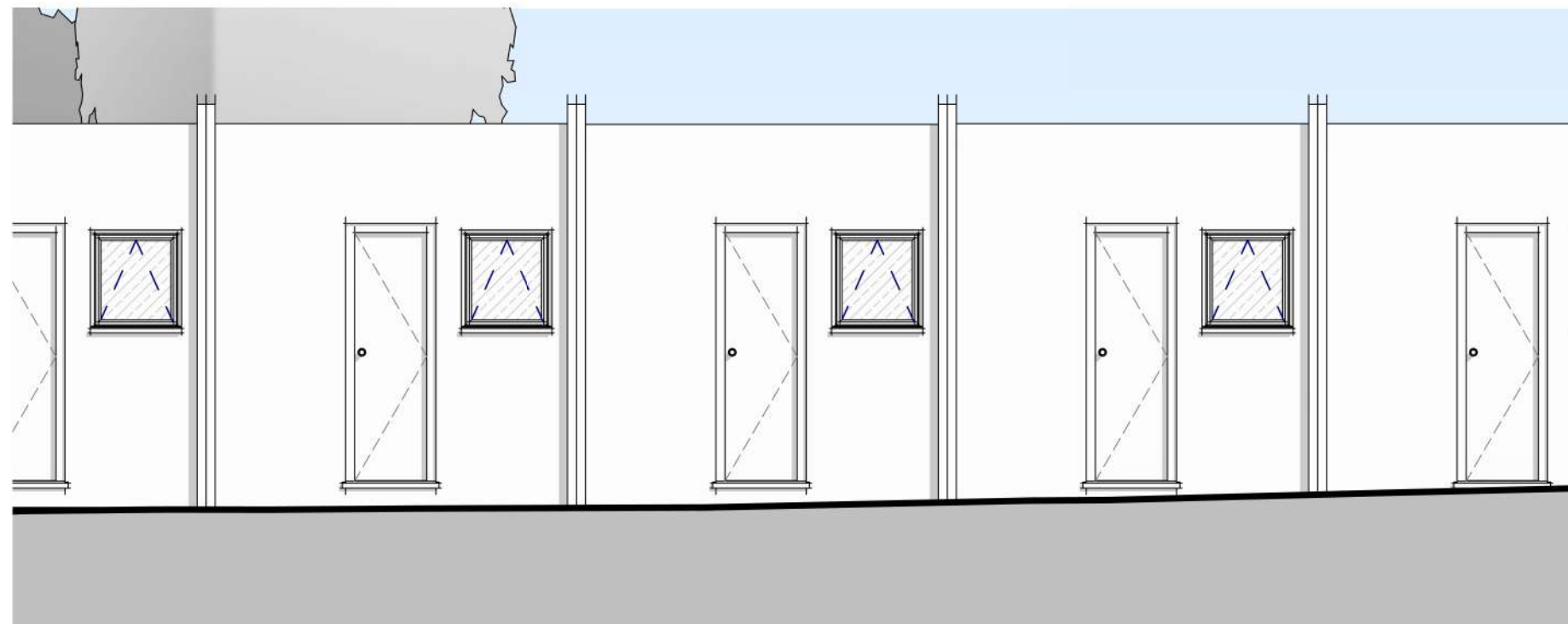


| <b><u>EXTERNAL MATERIALS</u></b> |   |
|----------------------------------|---|
| <b>Roof:</b>                     | Corrugated Steel Deck Finish  |
| <b>External Walls:</b>           | Tanalised softwood stud walls, filled with injected polyurethane foam insulation, finished either side with plastisol steel cladding in off- white, sat in between blue steel SHS columns sat on adjustable steel legs. |
| <b>External Doors:</b>           | Polyurethane insulated door with plastisol steel cladding to both sides. Colour to be blue.   |
| <b>External Windows:</b>         | ISS Window with integrated shutter. Colour to be white.   |
| <b>Rainwater Goods:</b>          | white uPVC  |



| Rev   | Description                   | Date   | Issued by                            |                               |
|---|-------------------------------|--|--------------------------------------|-------------------------------|
| <div></div>   |                               | <div><div>Menai House</div><div>Holyhead Road</div><div>Llanfairpwll</div><div>Anglesey</div><div>LL61 5UJ</div><div>01248 715006</div><div>info@dewis.uk.com</div><div>www.dewis.uk.com</div></div>                                     |                                      |                               |
| <div><div>Syrffwyr Siartredig Adeiladu</div><div>Penseiri Siartredig</div><div>Rheolwyr Prosiect</div><div>Ymgynghorwyr Pensaernïol</div><div>Technolegwyr Pensaernïol Siartredig</div><div>Ymgynghorwyr Adeiladau Hanesyddol</div></div>   |                               | <div><div>Chartered Building Surveyors</div><div>Chartered Architects</div><div>Project Managers</div><div>Architectural Consultants</div><div>Chartered Architectural Technologists</div><div>Historic Building Consultants</div></div> |                                      |                               |
| <div>Client</div> <div>HOCHTIEF (UK) CONSTRUCTION LTD.</div>  |                               |  |                                      |                               |
| <div>Project</div> <div>Temporary Accommodation Blaencelfn</div>  |                               |  |                                      |                               |
| <div>Drawing</div> <div>PROPOSED FLOOR PLAN &amp; ELEVATIONS</div> <div>Sleeper Pods</div>  |                               |  |                                      |                               |
| <div>File No.</div> <div>D958 - DEW - XX - ZZ - DR - A - 004</div>  |                               |  |                                      |                               |
| <div>ORIGIN</div> <div>DEW</div>  | <div>DISC.</div> <div>A</div> | <div>ZONE</div> <div>XX</div>  | <div>LEVEL</div> <div>ZZ</div>       | <div>TYPE</div> <div>DR</div> |
| <div>Drwg. No.</div> <div>004</div>   | <div>Rev.</div> <div>B.</div> | <div>Scale</div> <div>1 : 50</div>   | <div>Drawn by</div> <div>RW</div>    |                               |
| <div>Plot Date</div> <div>05.05.2023</div>  | <div>Size</div> <div>A1</div> | <div>Issue Status</div> <div>PAC</div>   | <div>Approved by</div> <div>DW</div> |                               |
| <div><div>This drawing must be read in conjunction with all related drawings. All dimensions must be checked and verified on site before commencing any work or producing shop drawings.</div><div>The originator should be notified immediately of any discrepancies. Only figured dimensions are to be worked to.</div><div>This drawing is copyright and remains the property of DEWIS architecture.</div></div> |                               |  |                                      |                               |